



# **Copernicus Service in Support to EU External Action**

## Service Overview



Space



# A message from the Director

The European Union Satellite Centre – or SatCen – is proud to be supporting the Copernicus Programme as the Entrusted Entity for the operational management of the Service in Support to EU External Action (SEA).

Our agency has always focused on supporting European Union and Member States in the context of Common Foreign and Security Policy (CFSP), particularly in the Common Security and Defence Policy (CSDP). Our 26 years of experience in delivering geospatial intelligence and imagery analysis services highlights the SatCen capability to manage the Copernicus SEA Service for the benefits of the EU External Action.

The Copernicus SEA Service is designed to assist European actors enhancing their prevention, preparedness and response to regional crisis by offering a comprehensive approach for situational awareness and decision-making, including CFSP/CSDP.

In this service overview, we aim to guide the reader through the main elements of the Copernicus SEA service, offering the users a selected list of application domains and the most commonly-requested product types. Considering the Copernicus SEA service evolutionary character, always looking to the future, the list of product types and application domains are in constant development, focusing on offering the users new and advanced products, through the Copernicus SEA Service Evolution.

We trust the provided information will serve to strengthen the Copernicus SEA Service user uptake, to widen the community of users and to continue satisfying users in a reactive and interactive way.



**Pascal Legai,**  
Director of the European Union Satellite Centre



## The Copernicus Service in Support to EU External Action Service Overview

<https://sea.security.copernicus.eu/products/>

European Union Satellite Centre  
Apdo. de Correos 511  
28850 Torrejón de Ardoz  
Madrid – Spain

### Image Credits

Copernicus SEA products: Copyright © European Union 2018 All Rights Reserved. Copyright of original imagery remains with the provider. This product remains the property of the European Union.

Other images: p. 4: (top) ECHO/B. Spadicini; (middle) © EU/A. Delafortrie; (bottom): © European Union | p. 5: (top) People in Need, Nikishyna, Ukraine, March 2015; (middle) European External Action Service, licensed CC BY-NC-ND 20; (bottom) A. Lamberti, licensed CCO) | p 7: (bottom left) G-MOSAIC project (DLR, University of Salzburg/Z\_ GIS), satellite data © Digital Globe.





# Copernicus: Europe's eyes on Earth



Copernicus is the world's largest single programme for observing and monitoring the Earth, for the ultimate benefit of all European citizens. It is coordinated by the European Commission in partnership with the European Space Agency (ESA) and the European Organisation for the Exploitation of Meteorological Satellites (EUMETSAT). It is implemented together with the Member States and competent European agencies acting as Entrusted Entities. Copernicus provides a unified system of systems fed by vast amounts of data based on satellite Earth Observation and in situ (non-space) sources. Copernicus data, and the set of value-added Copernicus Services,

help service providers, public authorities and other international organisations improve quality of life for the citizens of Europe inside and outside the EU borders. A set of dedicated satellites, the Sentinel family, supports the Copernicus programme, complemented by a large number of existing commercial satellites, known as the Contributing Missions, providing Very High Resolution imagery to the programme. Alongside this, in situ data are acquired from multiple sensors on land, in the sea and the atmosphere, and geospatial reference data are collected from competent authorities, such as national mapping agencies.

## Copernicus Services for Security applications

Copernicus supports EU policies in response to Europe's security challenges, improving crisis prevention, preparedness and response through its three Services for Security applications. The services are:



### Support to EU External Action

On-demand, mission-ready and rapidly - delivered geospatial information in support of EU foreign policy, crisis management, and monitoring of security issues outside the mainland European Union territory.



### Border Surveillance

Supporting border authorities in managing the external land and sea borders of the EU.



### Maritime Surveillance

Supporting tasks such as monitoring of fisheries, combatting marine pollution, ensuring safety of navigation, and customs and law enforcement.

## What is the Copernicus Service in Support to EU External Action?

The Copernicus Service in Support to EU External Action is an operational European geospatial intelligence service relying on the analysis of satellite imagery which assists the EU and its Member States in their operations and interests outside EU territory. More specifically, it is designed to support European actors dealing with crisis management and security abroad.

The service can be activated to respond within very short timescales and delivers custom-designed, mission-ready intelligence products, from First Impression Reports delivered within days, to longer-term monitoring campaigns, fulfilling user needs for information in a wide range of application domains.

### Why it matters?

The intelligence information provided by the Copernicus SEA Service contributes to improving European capacities in crisis prevention, preparedness and response. It also provides assistance in situations of crisis or emerging crisis and in preventing global and trans-regional threats having a destabilising effect.

### What is the role of SatCen?

The European Union Satellite Centre was entrusted by the European Commission, through a Delegation Agreement, with the operational management of the service, the issuing of industrial service contracts, the monitoring of the quality of the Copernicus SEA Service, and the provision of specific added value. SatCen is the central point of contact with the service's Authorised Users.



## Application domains

The Copernicus SEA service finds application in a number of domains related to European policies in the external action field. These domains provide the context for specific use cases showing how the products can service various institutional levels to support strategic decision-making and planning, as well as operations and intervention.



### Support to humanitarian aid

The Copernicus SEA service provides support to EU actors involved in delivering humanitarian aid in areas affected by armed conflict through products based on satellite imagery. The products allow for conflict event confirmation, impact and a-priori assessment, and provide a foundation on which to initiate response planning.

### Rule of law

The Copernicus SEA service provides support to EU actors involved in upholding the rule of law outside the EU, undertaking analyses of human activities and enabling the monitoring of potentially illegal activities in a range of contexts. The service can support early warning, monitoring and situational awareness in unstable areas where maintaining the rule of law is a subject of concern.



### Crisis, conflict and critical assets

The Copernicus SEA service provides support to EU actors involved in crisis and conflict analysis outside EU borders, and supports the safeguarding of critical assets abroad. The service can support early warning, monitoring and situational awareness in areas of conflict and crisis, providing EU actors with a range of analyses supporting planning, intervention and operations.



### Stability and resilience for development

The Copernicus SEA service provides support to EU development actors involved in fostering stability, security and prosperity with neighbouring states. The Copernicus SEA enables efficient mechanisms to plan and monitor the implementation of development interventions linked to reinforcing stability and resilience, thus supporting informed decision-making and policy implementation.



### Security of EU citizens abroad

The Copernicus SEA service provides support to EU actors involved in fostering the security of EU citizens abroad. It can deliver an analysis of key facilities and buildings, allowing the preparation and update of evacuation plans and routes.

### Cultural heritage

The Copernicus SEA service provides support to EU actors involved in monitoring damages to world cultural heritage in areas affected by armed conflicts. The service can assess potential damage to cultural heritage sites over areas of conflict inaccessible to the international community and offers supplemental information when access is possible.



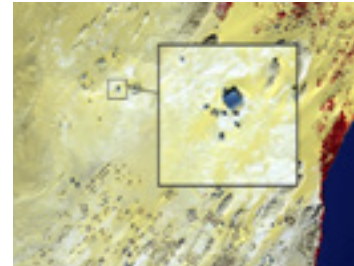


## The Copernicus SEA categories

The Copernicus SEA is conceived as a responsive, customisable service, in which user needs are evaluated by an expert team which recommends a solution based on geoinformation products. The list on the opposite page presents some common categories of user needs, and provides insight into the range and flexibility of the service's capabilities.

Please see the Product Portfolio for further details, or visit:

**<https://sea.security.copernicus.eu/products/>**



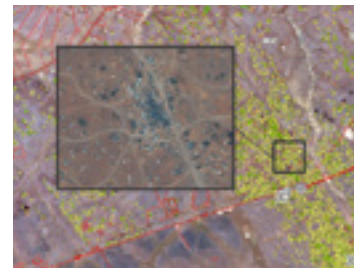
Activity Report



Support to Evacuation Plan



Road Network Status Assessment



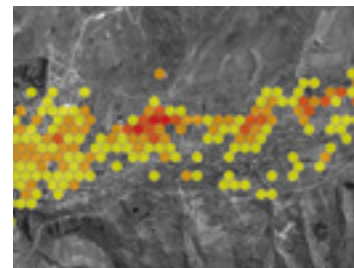
Camp Analysis



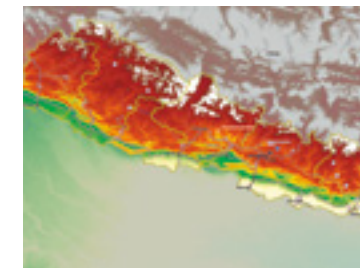
Critical Infrastructure Analysis



Non-EU Border Map



Conflict Damage Assessment



Crisis Situation Picture



Reference Map

## Products

A number of different products are available (in print or digital format) in order to satisfy a wide range of user needs.

### Reporting products

#### Quick Report (QR)

The QR is the fastest reporting and analysis product (1 page in length) available from the Copernicus SEA service. It is focused on providing specific answers to a user request within a tight deadline.

#### First Impression Report (FIR)

The FIR is a very fast reporting and analysis product (2-4 pages, maximum 10), providing timely analysis, monitoring of activity and change detection analysis of the specific Locations of Interest (LOI) or, exceptionally, Areas of Interest (AOI).

#### Briefing Note (BN)

The BN is a fast reporting and analysis product (3-15 pages), produced using information from satellite imagery and collateral sources, and aggregated findings of previous analysis.

### Cartographic products

#### Digital Geographic Information (DGI) – Image Map

The DGI – Image Map product provides cartographic and thematic information over a specific AOI. It may include a detailed “map series”, depending on the area and the distribution of data.

#### Digital Geographic Information (DGI) – City Map

The DGI – City Map product provides complete cartographic information over a city at a detailed scale. It may include a detailed “map series”, depending on the area and the distribution of data.

#### MapBook

The MapBook is a product combining cartographic information with analysis of activity, optionally complemented with thematic maps.

#### Country Map Coverage (CMC)

The CMC is a single topographic map (1 page) covering a region or a country. It includes very basic vector data such as administrative, transportation, population-related features, border crossing points and toponyms.

## Who uses the Copernicus SEA service?

The Copernicus SEA service can be activated only by Authorised Users. These include:

- The European Commission services
- The European Union's External Action Service
- CSDP Missions and Operations
- Member State authorities, such as:
  - Ministries of Defence or Foreign Affairs
  - Intelligence centres
- Intergovernmental bodies, such as:
  - The United Nations' Department of Field Support (UN-DFS) or Department of Peace-Keeping Operations (DPKO)

The primary target users are European entities, EU and Member State decision-makers and key international stakeholders, as appropriate under EU international cooperation agreements.

## How to access the service?

The process of activating the service is described in the User Start Guide (available at the link below), which outlines the steps to be followed and the actors involved.



For more information on the Copernicus SEA service, please visit  
<https://sea.security.copernicus.eu/products/>

or email: [CopernicusSEA\\_Coordination@satcen.europa.eu](mailto:CopernicusSEA_Coordination@satcen.europa.eu)





